

# WATER TRAILER™



## OWNER'S MANUAL




**Product Code:**  
WW1010D01

Version 1

Copyright © Enduraplas. All Rights Reserved.



# CONTENTS

INTRODUCTION	3
<hr/>	
WARNINGS 	4 - 5
<hr/>	
GETTING STARTED	6 - 16
<hr/>	
MAINTAINING	17
<hr/>	
WINTERIZING	18 & 20
<hr/>	
PUMP PERFORMANCE	21
<hr/>	
TROUBLESHOOTING	22 & 23
<hr/>	
WARRANTY	24- 27
<hr/>	
REGISTERING WARRANTY	28
<hr/>	
PARTS BREAKDOWNS	29 - 41
<hr/>	

# INTRODUCTION

**Congratulations!** You now own an Enduraplas Water Trailer sprayer. Durable design and construction assure you a life-time of extreme performance. No sprayer is tougher. No sprayer will last longer.

Take a look through this owner's manual to learn how the pros use their Enduraplas sprayer.

**Order Genuine Enduraplas Parts & Accessories:**

[parts.enduraplas.com](http://parts.enduraplas.com)



**Watch Instruction Videos:**

[www.youtube.com/enduraplas](http://www.youtube.com/enduraplas)

**Discover More Helpful Tips:**

[blog.enduraplas.com/spraying](http://blog.enduraplas.com/spraying)

# WARNINGS

1. When connecting this sprayer to your UTV, pickup (or vehicle), ensure that you have read the vehicle's Owner's Manual and that you comply with all the weight restrictions as specified by the vehicle's manufacturer, as overloading can cause injury or death. Remember that 1 gallon of water weighs 8.33 pounds.
2. To ensure your own safety and that of others, you must comply with all relevant environmental, workplace health, safety legislation and codes of practice.
3. Select and wear appropriate Personal Protection Equipment in accordance with the label of the product you intend to use.
4. Improper or careless use of this sprayer can cause serious injury. Minors should never be allowed to use this sprayer. This sprayer should not be used when bystanders or animals are in the area. This sprayer should never be used while children are in the area.
5. Never leave the sprayer unattended without turning off the pump, relieving the line pressure, and flushing the sprayer of any harmful chemicals.
6. You must be in good mental health to operate this sprayer and not be under the influence of alcohol or any drugs that could impair your vision, physical strength, dexterity, judgment, or other mental capacity.
7. Be alert and never touch any part of the engine exhaust system (muffler, shield, header pipes, etc.) while the engine is running. Always allow enough time, after stopping the unit, for proper cooling of the muffler and surrounding parts.
8. Refuel engine with care. Gasoline is flammable, and gasoline vapor can explode. Refuel in a well-ventilated area, with the engine stopped.

# WARNINGS

9. Never run the pump in a closed or confined area. Exhaust gas contains carbon monoxide which is poisonous to humans. Avoid inhalation of exhaust gas.
10. No modifications and/or alterations may be made to this sprayer. Any such modifications not only void the sprayer warranty but can make the unit dangerous to anyone operating the pump.
11. Always inspect hoses and piping to avoid burst injuries.



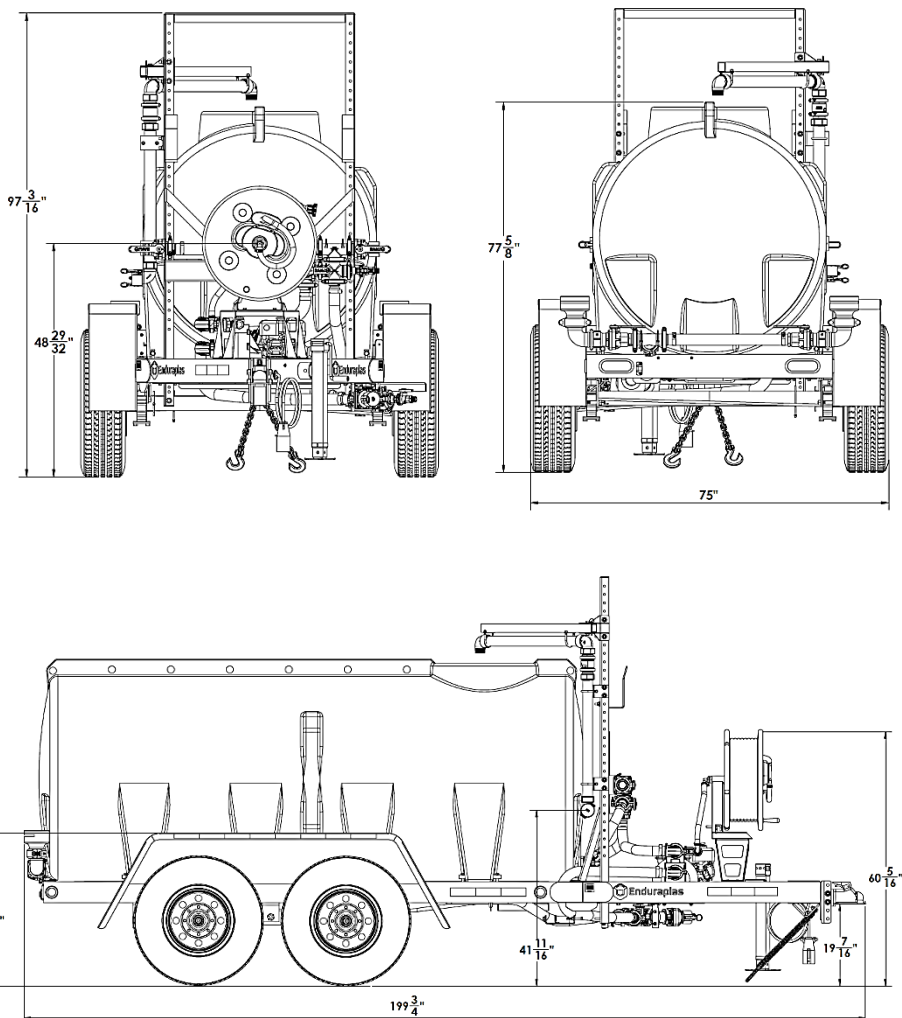
**Watch Instruction Videos:**  
[www.youtube.com/enduraplas](http://www.youtube.com/enduraplas)

## GETTING STARTED

### Specifications

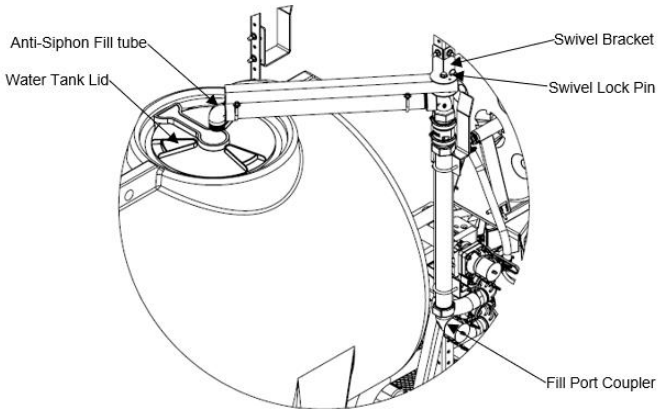
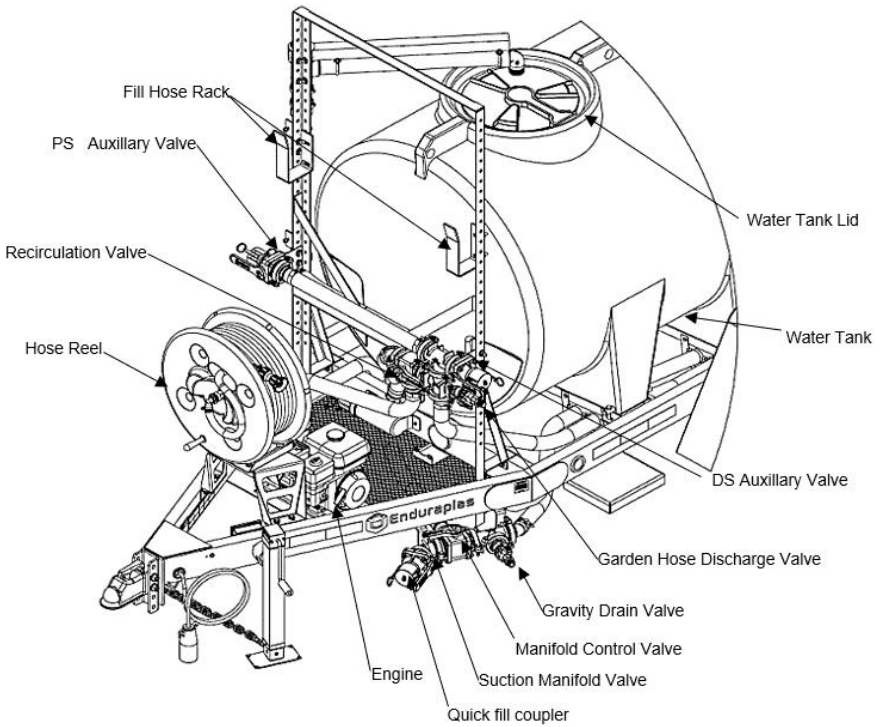
<b>Product Code</b>	WW1010D01
<b>Length</b>	200"
<b>Width</b>	75"
<b>Height</b>	98"
<b>Hose Size</b>	2"/Black Fertilizer
<b>Size (US Gallons)</b>	1010
<b>Dry Weight (lbs)</b>	1810
<b>DOT Compliant</b>	Yes
<b>Frame Construction</b>	6" x 2" Rectangular Tubing
<b>Axles</b>	2 x 7,000 Lbs. Slipper Spring
<b>Tires</b>	235/80 R16 10 Ply DOT Tire and Amp Wheel
<b>Tank Type</b>	Poly Sump bottom transport tank
<b>Hitch Type</b>	20,000 lbs. 2-5/16" Ball
<b>Brakes</b>	Electric with Emergency breakaway (2 x Axle)
<b>Fenders</b>	Yes
<b>Electrical Plug</b>	7 Pole RV Plug
<b>Lights</b>	DOT Compliant Clearance, Stop, Turn, Tail, License
<b>Motor</b>	Honda® GX160 5.5 HP
<b>Pump</b>	Aussie fire chief pump 119GPM
<b>Fill Methods</b>	Quick Fill, Pressure Fill, Direct Fill
<b>Delivery Methods</b>	<ul style="list-style-type: none"> <li>•1" x 100' Hose Reel Mounted</li> <li>•Two Garden Hose (Pressurized and Drain Only)</li> <li>•Two Rear Spray Nozzles</li> <li>•PS and DS pressurize camlock Discharge</li> </ul>

## GETTING STARTED



## GETTING STARTED

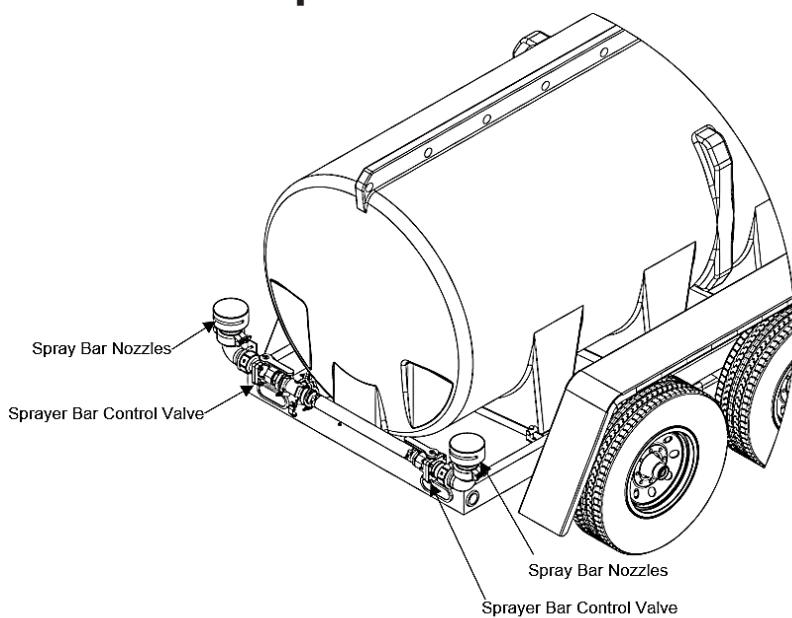
# Water Trailer Components





## GETTING STARTED

# Water Trailer Components



**DS/PS Auxiliary Valve**— a standard two-inch manifold that shuts off and discharge water at the Fire hose coupler.

**Recirculation Valve**— 3-position handle. Allows 3 different modes of operation, off, discharge or suction.

**Hose Reel** — Used for extracting water hose.

**Water Tank Lid**— Remove this cap to fill water tank if using a fire hydrant type method.

**Water Tank**— Capacity is 1010 gallons. Fill with clean water (no debris).

**Garden Hose Discharge Valve**— A discharge valve that can be coupled with a garden hose.

**Gravity Drain Valve**— When draining of the water tank is required open this valve to drain water.

**Manifold Control Valve**— 2-position handle. Allows 2 different modes of operation, discharge or suction.

**Suction Manifold Valve**— Fill option for utilizing trailer pump to fill tank with liquid.

**Quick fill Coupler**—2-inch male adapter.

**Engine**— This water trailer uses a Honda GX160, 5.5 HP, 4-stroke, single-cylinder, gasoline engine.

**Anti-Siphon Fill Tube**— 2inch pipe.

**Swivel Bracket**— A hinge bracket used to support the swivel arm frame and anti-siphon fill tube.

**Swivel Lock Pin**— Used to lock swivel arm and Siphon fill tube in place when filling.

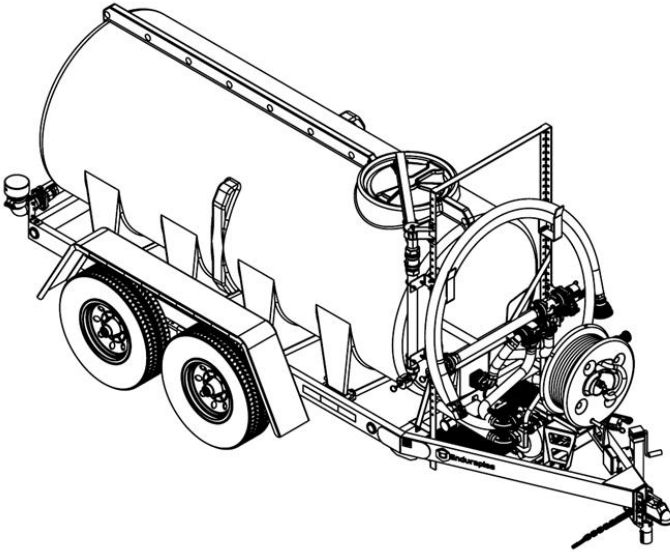
**Fill Coupler**— Connect the 2" QD coupler end of this pipe to a fire hydrant. An interface hose will be required to connect from the pipe's QD coupler to the fire hydrant.

**Sprayer Bar Nozzle**— Located at the rear of the water trailer are two water spray nozzles.

**Sprayer Bar Control Valve**— Located at the rear of the water trailer for turning spray nozzles ON and OFF.

**Fill Hose Rack**— Storage for hoses and accessories.

## GETTING STARTED



1) Fill the engine with regular gasoline.

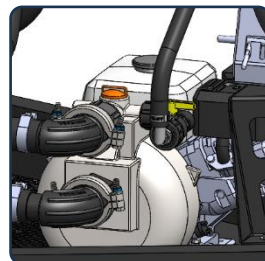


2) Remove oil cap and fill the engine with 0.95 quarts of 10W-30 engine oil.

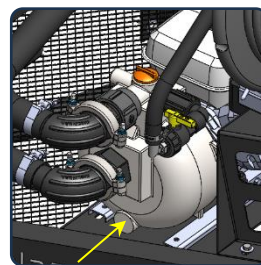


**GETTING STARTED****Priming the Pump**

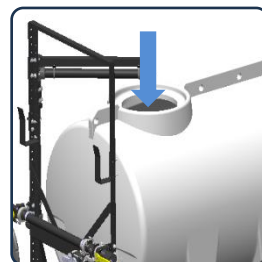
**1)** You need to ensure your pump is correctly primed. Start by threading off the cap on top of pump and fill with water.



**2)** Before starting your engine, make sure the drain plug and prime plug are tightened securely and properly holding the seal O-rings in place.

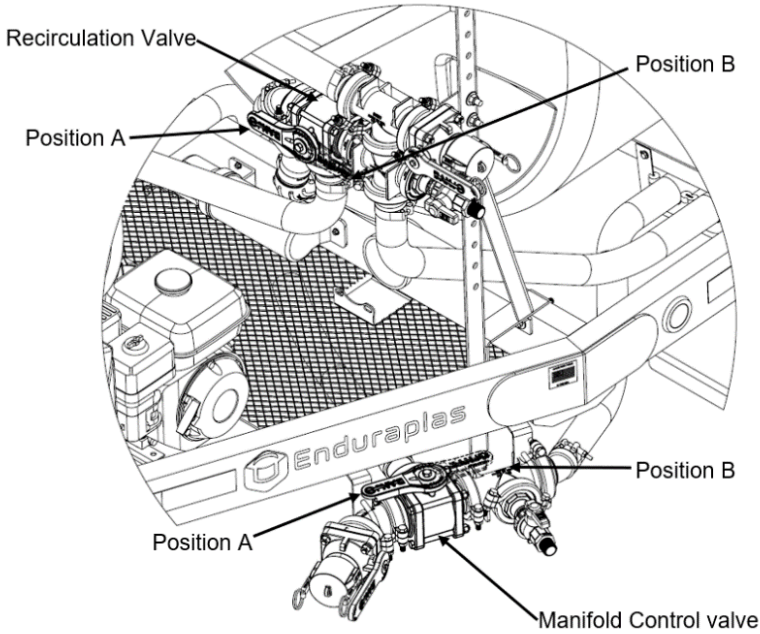


**3)** Fill the tank 1/4 full with water for testing unit.



# GETTING STARTED

## Operation



**PUMP CONTROL OPERATION TABLE**

Operation	Manifold Control Valve	Recirculation Valve	Suction Valve	DS and PS Aux Valve	Garden hose Valve	Sprayer Bar Control valve	Gravity Drain valve
<b>Engine Start/Parked</b>	Position A	Position B	CLOSE	CLOSE	CLOSE	CLOSE	CLOSE
<b>Pressure fill</b>	Position B	Position A	CLOSE	CLOSE	CLOSE	CLOSE	CLOSE
<b>Quick Fill</b>	Position A	Position A	OPEN	CLOSE	CLOSE	CLOSE	CLOSE
<b>Direct Fill</b>	Position A	Position A	OPEN	CLOSE	CLOSE	CLOSE	CLOSE
<b>Rear Spray Bar Discharge</b>	Position B	Position B	CLOSE	CLOSE	CLOSE	OPEN	CLOSE
<b>Aux Valve Discharge</b>	Position B	Position B	CLOSE	OPEN	CLOSE	CLOSE	CLOSE
<b>Garden Hose Discharge</b>	Position B	Position B	CLOSE	OPEN	OPEN	CLOSE	CLOSE
<b>Drain</b>	Position B	Position B	CLOSE	CLOSE	CLOSE	CLOSE	OPEN

## GETTING STARTED

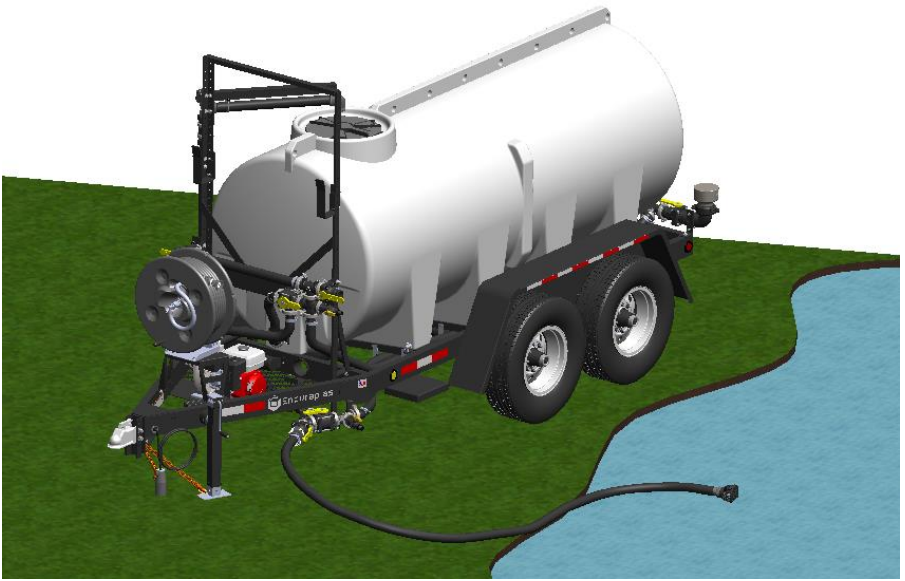
### Using PRESSURE-FILL



1. Remove the water tank lid.
2. Move the swivel arm bracket of the anti-siphon fill tube to the right location and lock it in place with lock pin.
2. Attach hydrant adapter to fire hydrant if necessary.
3. Attach fire hydrant discharge hose between the fill port coupler and the fire hydrant.
4. For the valve lever positions for a Pressure Fill please refer to the Pump Control Operation Table.
5. Make sure there are no bends or sharp kinks in the hose between the fire hydrant and water tank fill port.
6. Slowly open the hydrant valve. The water tank should begin to fill.
7. Fill the water tank to the desired level and close the fire hydrant valve.
8. Remove the fire hydrant discharge hose and allow the hose to drain. Remove the hydrant adapter.

## GETTING STARTED

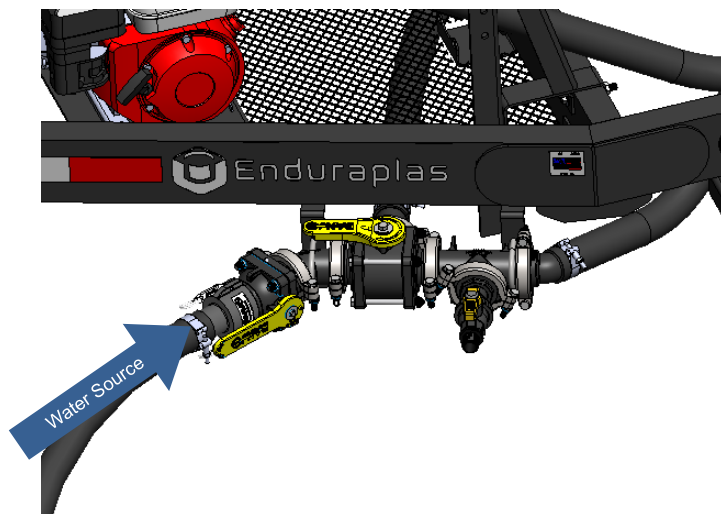
### Using the DIRECT-FILL



1. Remove the dust cap from the suction manifold valve.
2. Connect the fill hose coupler to the suction manifold valve and put the strainer to the desired water source.
3. For the valve lever positions for a Direct Fill please refer to the Pump Control Operation Table.
4. Turn ON the engine.
5. Fill the water tank to the desired level.
6. To stop water flow place manifold control valve lever to Position B and Close the suction valve.
7. Remove fill hose coupler.
8. Install dust cap back onto the quick fill coupler.

## GETTING STARTED

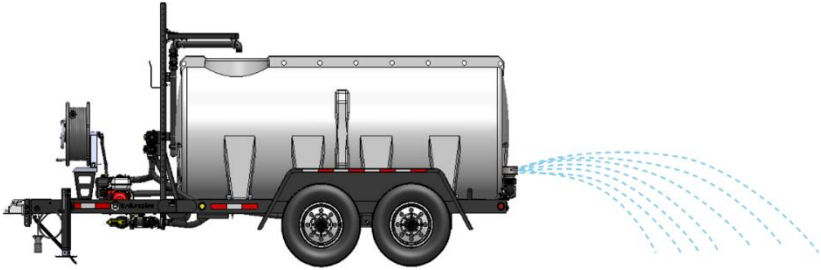
### Using the QUICK-FILL



1. Remove the dust cap from the suction manifold valve.
2. Connect the fill hose coupler to the suction manifold valve and put the strainer to the desired water source.
3. For the valve lever positions for a Quick Fill please refer to the Pump Control Operation Table.
4. Fill the water tank to the desired level.
5. To stop water flow place manifold control valve lever to Position B and Close the suction valve.
6. Remove fill hose coupler.
7. Install dust cap back onto the quick fill coupler.

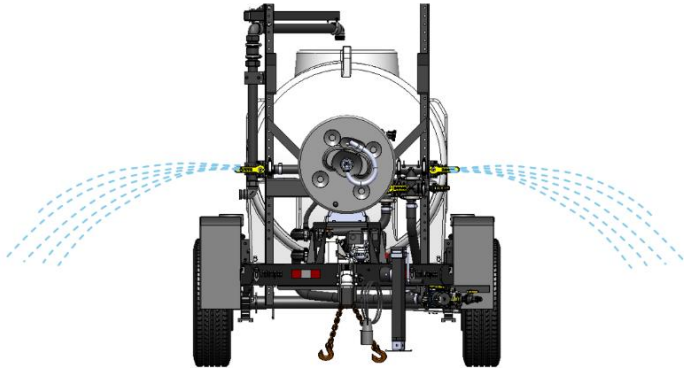
## GETTING STARTED

### Rear Bar Spray Discharge



1. Turn the Manifold control valve in Position B and the Recirculation valve In Position B.
2. Start the engine and increase full throttle and open the Sprayer bar control Valve.
3. For the valve lever positions for a Rear Spray bar Discharge please refer to the Pump Control Operation Table.

### Auxillary valve Discharge



1. Turn the Manifold control valve in Position B and the Recirculation valve. In Position B.
2. Start the engine and increase full throttle and open the DS and PS Aux Valve.
3. For the valve lever positions for a DS and PS Aux Valve Discharge please refer to the Pump Control Operation Table.



# MAINTAINING

English

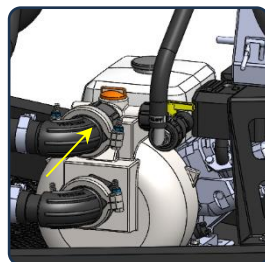
## GETTING STARTED

The information applies in normal operating conditions. The specific intervals must be shortened accordingly for longer daily working hours. If the machine is only used occasionally, the intervals can be extended accordingly.		Before starting work	At the end of work and/or daily	Weekly or every 40 operating hours	After the first 5 operating hours	Every 250 operating hours or once a year	If damaged	If required
Complete machine	Visual inspection (condition, leaks)	X						
	Clean		X					
Tank, hoses and fittings	Clean		X					
	Drain		X					
Filter basket (inside lid)	Clean		X					X
Spray lance nozzle	Clean							X
	Replace						X	
All accessible screws and nuts	Retighten							X
Safety labels	Replace						X	
Pump	Maintain	Read and follow all maintenance and care instructions in the Pump manual.						

# WINTERIZING

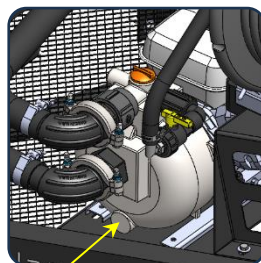
## 1) Drain Tank

Disconnect flange clamp fitting from suction side of pump, open suction valve to drain all water from tank.



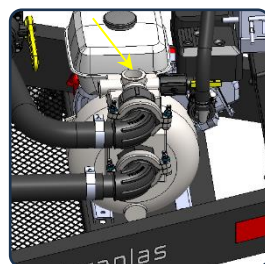
## 2) Drain Pump

Take drain plug out of bottom of pump to drain water out of pump.



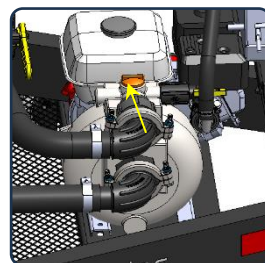
## 3) Blow out Plumbing Lines

Using compressed air, blow out the hose lines to remove all water from the system. This can be done by removing cap on pump and blowing air in, make sure hose reel nozzle is open.



## 4) Install Drain Plug

Reinstall drain plug on pump.



# WINTERIZING

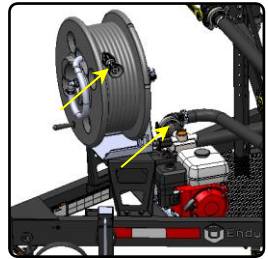
## 5) Flush with Anti-freeze

Pour a small amount of anti-freeze into the tank and run the pump until the colored liquid starts coming through the spray ends to ensure system does not freeze.



## 6) Store Sprayer Inside

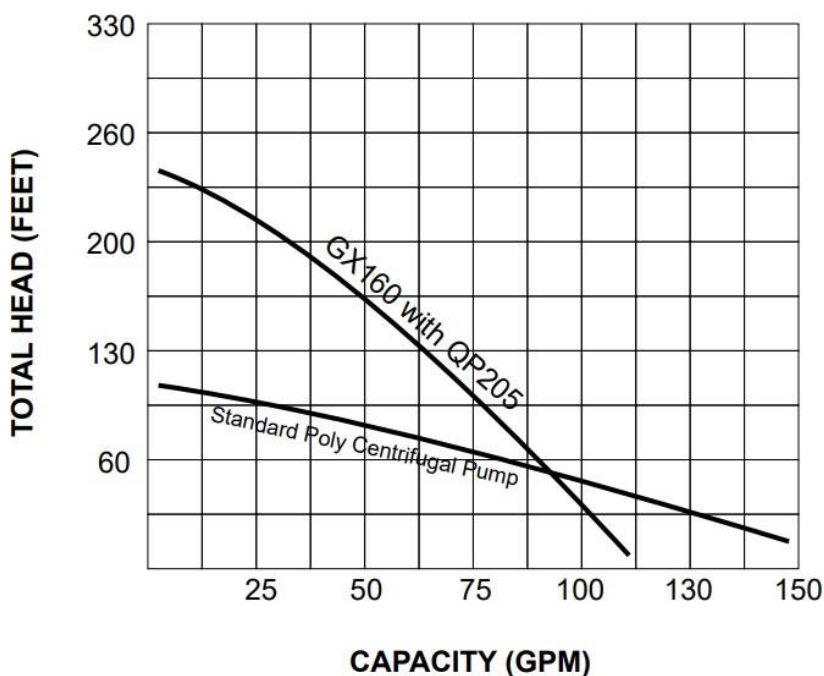
Leave suction valve and hose nozzle open and store in a safe, dry environment.



**Watch Instruction Videos:**  
[www.youtube.com/enduraplas](http://www.youtube.com/enduraplas)

# PUMP PERFORMANCE

An Aussie® QP205 pump performs at this level when powered with a GX160 Honda® engine. The QP205 and GX160 is used on the Water Trailer Series.



# TROUBLESHOOTING

<b>CONDITION</b>	<b>CAUSE</b>	<b>REMEDY</b>
<p>Pump will not prime</p>	<ol style="list-style-type: none"> <li>1) Insufficient motor RPM</li> <li>2) Air leak on suction plumbing</li> <li>3) Blocked/Restricted intake hose</li> <li>4) Pump is out of water</li> </ol>	<ol style="list-style-type: none"> <li>1) Increase motor RPM until pump primes</li> <li>2) Tighten/replace fittings &amp; hose clamps. Verify suction hoses are in good condition</li> <li>3) Remove blockage from suction line, ensure line is not kinked</li> <li>4) Remove plug on top of pump and fill with water</li> </ol>
<p>Pressure drops/fluctuates during standard operation</p>	<ol style="list-style-type: none"> <li>1) Restriction on suction line</li> <li>2) Pump sucking air</li> </ol>	<ol style="list-style-type: none"> <li>1) Inspect tank and suction lines and remove restriction</li> <li>2) Tighten fittings</li> </ol>

<b>CONDITION</b>	<b>CAUSE</b>	<b>REMEDY</b>
Hand gun loses pressure	<ol style="list-style-type: none"> <li>1) Debris in hose or nozzle</li> <li>2) Pump losing prime</li> <li>3) Pump pressure dropping/fluctuating</li> </ol>	<ol style="list-style-type: none"> <li>1) Unthread nozzle tip and clean</li> <li>2) See Remedy for 'Pump will not prime or loses prime'</li> <li>3) See Remedy for 'Pressure drops/ fluctuates during standard operation'</li> </ol>



**Watch Instruction Videos:**  
[www.youtube.com/enduraplas](http://www.youtube.com/enduraplas)

# WARRANTY

1. Poly Tank Limited Warranty - Subject to other terms in this Limited Warranty, Manufacturer warrants to the original end user that this Tank will be free from material defects caused during the manufacturing process for a period of 5 years from the Purchase Date provided such warranty to the original end user shall be extended to 10 years from the Purchase Date if the original end user registers the Tank with Manufacturer within 30 days of the Purchase Date. To register the Limited Warranty, registration must be completed in accordance with the requirements set forth at [enduraplaswarranty.com](http://enduraplaswarranty.com)

Other Products and Parts Limited Warranty - Subject to other terms in this Limited Warranty, Manufacturer warrants to the original end user that products and parts manufactured by Manufacturer (other than tanks) will be free from material defects caused during the manufacturing process for a period of 1 year from the Purchase Date unless otherwise expressly stated in writing by Manufacturer that an extended warranty applies.

2. Other Warranties Disclaimed and Excluded

THERE ARE NO WARRANTIES, EXPRESS OR IMPLIED, WHICH EXTEND BEYOND THE LIMITED WARRANTY HEREIN STATED, AND MANUFACTURER EXPLICITLY DISCLAIMS AND EXCLUDES ANY AND ALL OTHER WARRANTIES INCLUDING BUT NOT LIMITED TO WARRANTIES OF MERCHANTABILITY, FITNESS FOR PARTICULAR PURPOSE, CUSTOM OR USAGE OF TRADE, AND COURSE OF DEALING. NO AGENT, EMPLOYEE OR REPRESENTATIVE OF MANUFACTURER HAS AUTHORITY TO BIND MANUFACTURER TO ANY REPRESENTATION OR WARRANTY EXCEPT AS STATED IN THIS LIMITED WARRANTY.

# WARRANTY

3. Limitation of Liability under the Limited Warranty - In addition to those warranties disclaimed and excluded in clause 2 above, Manufacturer expressly further limits its warranty and liability under the Limited Warranty as set forth below in this clause 3.
  - 3.1. The liability of Manufacturer under this Limited Warranty is excluded to the extent that any defect has been caused or contributed to by:
    - a) any accident, contamination, tampering, willful damage, abuse, modification, improper storage, improper use (including but without limitation the storage of material) or negligent act of, or omission by, any person other than Manufacturer;
    - b) the improper installation of the Goods, or deterioration of the base on which any of the Goods rest or are mounted to;
    - c) any damage to the Goods caused by storm, wash away, landslide, mudslide, lightning, or any other natural phenomenon, vermin or other pests, and any undermining of the base of the Tank through any cause whatsoever;
    - d) the repositioning of the Goods from their original installation;
    - e) weathering or degradation of the Goods due to extreme climatic conditions;
    - f) improper installation of extra fittings;
    - g) any staining or discoloration, including from trees or ash fall-out from fires or other causes;
    - h) a Tank not being placed on a base that is free of any protruding objects of any kind;
    - i) a Tank being used for any purpose other than the storage of suitable liquids at the ambient temperatures.



# WARRANTY

3.2. Without limiting the generality of clause 3.1:

- a) Manufacturer will not be liable for any personal injury, indirect or incidental damages, consequential losses, loss of liquids, loss of profit or any like claims whatsoever arising from any use of, or incidental to, or repairs to any of the Goods by a party other than Manufacturer;
- b) to the extent that any component or material (including, but without limitation the polyethylene) used in the manufacture of any of the Goods is supplied and/or manufactured by a third party, the liability of Manufacturer is limited to Manufacturer's right of redress (if any) against the third-party supplier/manufacturer;
- c) Tanks feature a vented lid at the time of manufacture. Any subsequent pressurization of the Tank by removing the vent, sealing the vent, or otherwise will cause this Limited Warranty as to such Tank to be null and void.
- d) The liability of Manufacturer under this Limited Warranty is limited to, at Manufacturer's discretion:
- e) providing a replacement Good (including shipping but excluding other replacement costs);
- f) refunding an amount equal to a sum equal to the current Retail price divided by the months in the warranty, multiplied by the months remaining in the warranty period;
- g) repairing the Good at no cost.

4. Proof of Purchase - The original invoice or other similar proof of purchase of the applicable must be provided by Purchaser to Manufacturer when making a claim under this Limited Warranty. Warranty claims must be received in writing by Manufacturer within the Limited Warranty period.

5. Claims and Questions - If you have questions about this Limited Warranty or to make a warranty claim, contact Manufacturer at: [customercare@enduraplas.com](mailto:customercare@enduraplas.com)
6. Definitions - For this Limited Warranty the following definitions apply:
  - a) Manufacturer means Enduraplas LLC.
  - b) Purchase Date means the date upon which the applicable goods were purchased by the original end user.
  - c) Purchase Price means the actual price paid for the Tank by the original Purchaser.
  - d) Tank means the storage Tank manufactured by Manufacturer and purchased by the original end user Purchaser being the subject matter of the Limited Warranty.
  - e) Good(s) mean Tanks and/or other products or parts manufactured by Enduraplas LLC.
  - f) Limited Warranty means this written Limited Warranty.
7. State Law - Some states do not allow the exclusion or limitation of incidental or consequential damages, so the above limitation and exclusion may not apply to certain parties. Some states do not allow limitation on how long an implied warranty lasts, so the above limitation may not apply to certain parties. This limited warranty gives specific legal rights and other rights, which vary from state to state, may also apply.
8. Governing Law - This Limited Warranty will be governed by the laws of the State of Minnesota, without giving effect to any choice of law rule that would cause the application of the laws of any other jurisdiction.

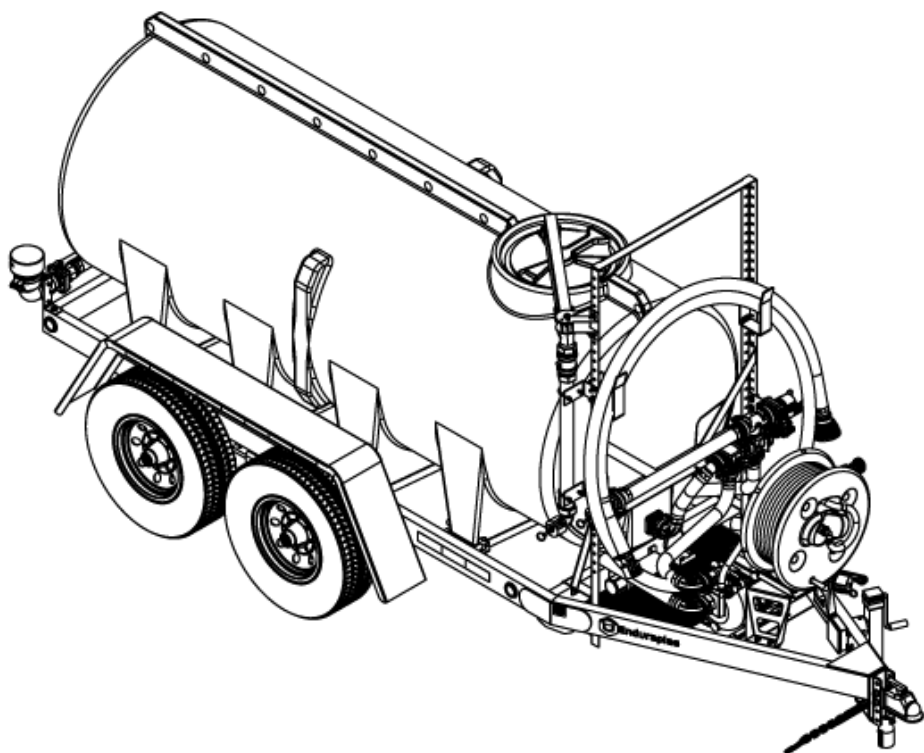
# REGISTERING WARRANTY

## Serial Number Location



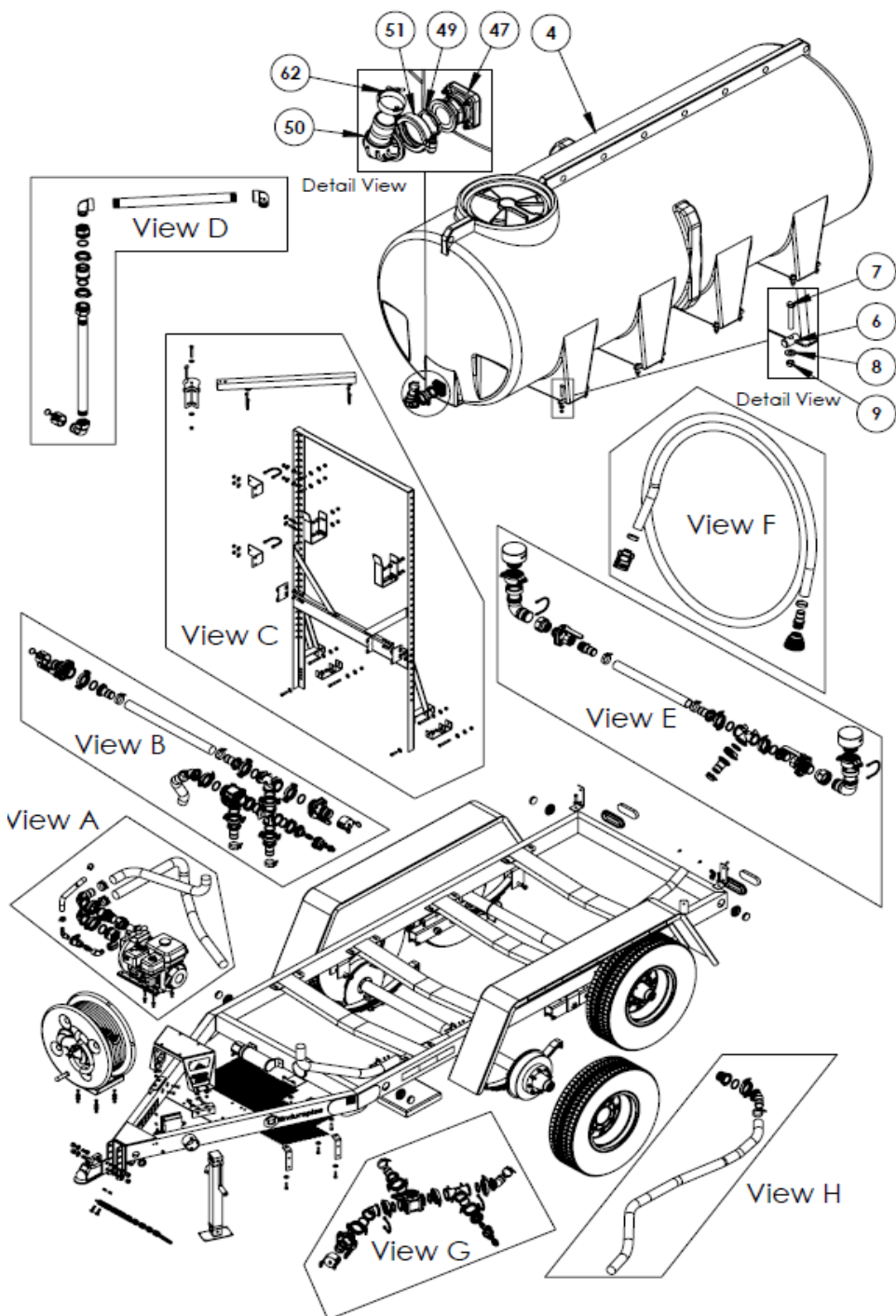
### How to Activate

To double your 5-year tank warranty, visit [enduraplaswarranty.com](http://enduraplaswarranty.com) and register this product.



# WW1010D01

# OVERVIEW



**WATER TRAILER™**

# PARTS LIST

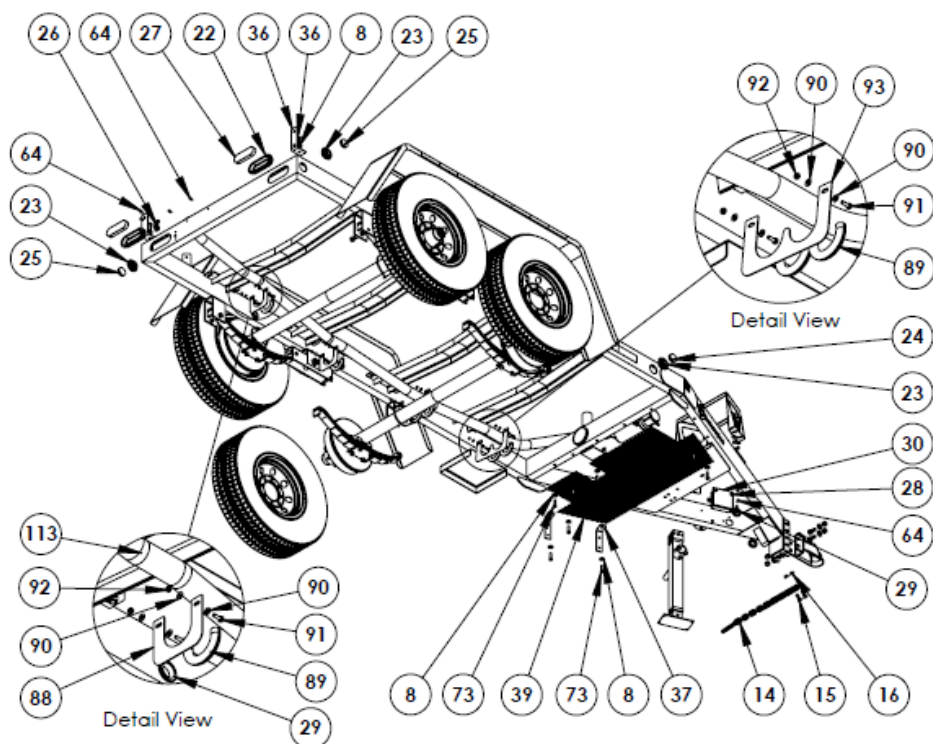
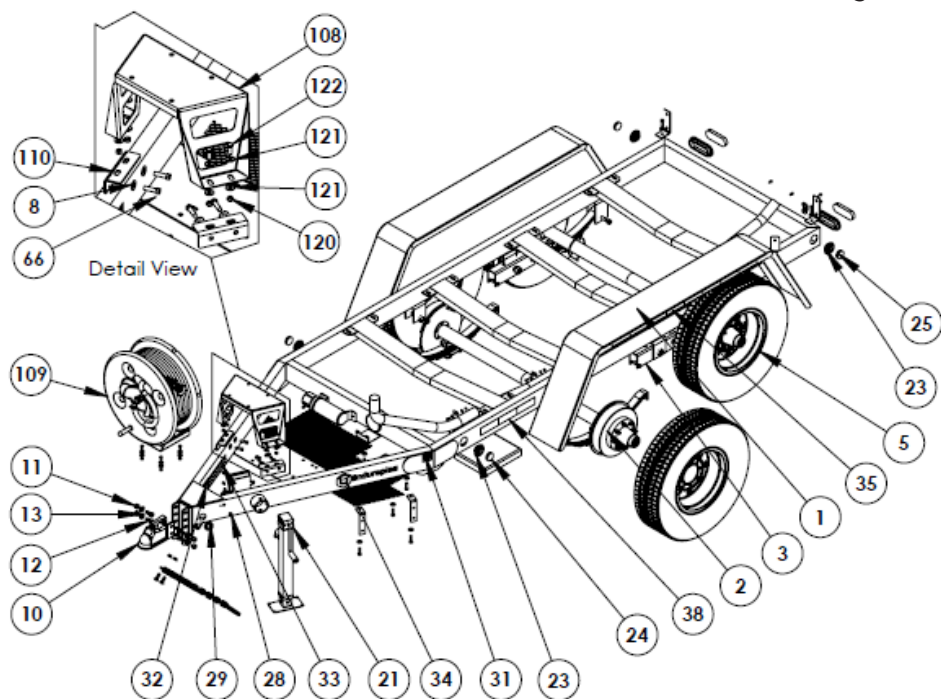
ITEM NO.	PART #	DESCRIPTION	QTY.
1	AZTN1010H	1010 Gallon DOT Nurse Trailer Frame	1
2	CTA088	7 000 LB. SPRING AXLE 64.5HFX49.5SC ELECTRIC)	2
3	CTMH005	Tandem 7K Slipper Spring Hanger Kit with Hardware	2
4	THD01010	1010 Gal Sump tank	1
5	CTW007	ST23580R16 10 PLY TIRE WITH WHITE MOD	4
6	AZP03	15-16 x 10" tie down pin	8
7	CHBZ041325	7/16 x 3 Bolt	17
8	CHWZF045	7/16" Flat Washer	73
9	CHNZN0425	7/16" Nylock Nut	37
10	CTH003	2 5-16 EZ-Latch Coupler Plated	1
11	CHNZL0628	5/8-11 inch Grade 8 2-Way Lock Nut Yellow Zinc Plated	4
12	CHBZ060728	0.625-11 inch x 1.5 inch Grade 8 Hex Head Bolt Zinc Plated Y	4
13	CHWZF068	5-8 inch Grade 8 Flat Washer Yellow Zinc Plated	4
14	CTC001	G-43 Safety Chain 16 200 lb Rated	2
15	CHBZ050725C	.5 x 1.5 CARRIAGE BOLT	2
16	CHNZF0525	.5 FLANGE NUT Zinc	2
17	APAC09	AUSSIE FIRE CHIEF PUMP W/PULL START	1
18	CHBZ020725	5/16 x 1-1/2 bolt	4
19	CHNZN0225	5/16 Nylock nut	4
20	CHWZF025	5/16 Flat washer	4
21	CTJ001	15 Side Wind Trailer Jack	1
22	CTEL005	6 Oval Grommet	2
23	CTEL002	2 Round Sidemarker Grommet	4
24	CTEL003	2 Round Amber Sidemarker Lens	2
25	CTEL004	2 Round Red Sidemarker Lens	2
26	CTEL001	Black Base License Lamp Vertical Plane Mount	1
27	CTEL006	6 Oval LED Red Lens	2
28	CTEW010	Nylon bushing	2
29	CTMG001	Grommet 1.5 ID	4
30	CTEW014	Brakeaway Battery	1
31	CTMD001	MADE WITH PRIDE IN THE USA. PACK OF 100 decal	2
32	CTMD002	CHECK FOLLOWING POINTS BEFORE TOWING decal	1

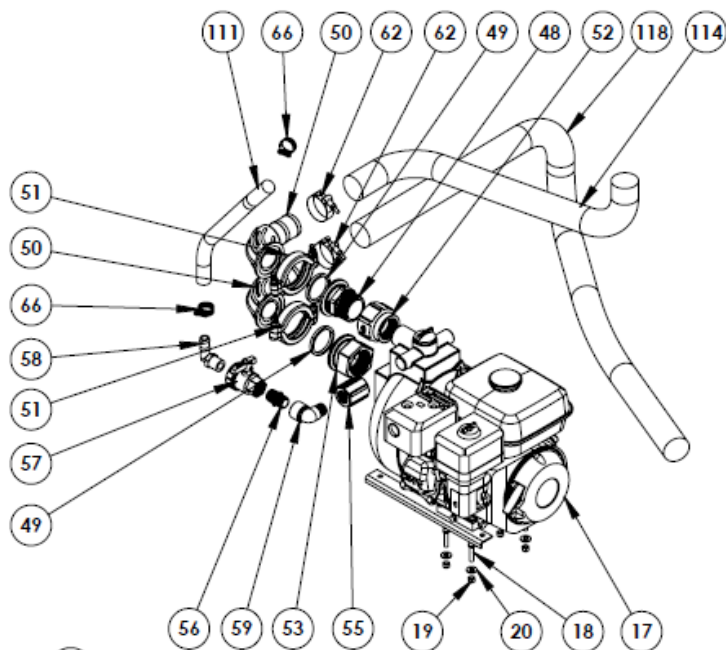
ITEM NO.	PART #	DESCRIPTION	QTY.
33	CTMD003	BUMPER PULL ELECTRIC BRAKE STICKER decal	1
34	CTMD004	ENDURAPLAS 15.65 inch x 4.5 inch 1-Color Diecut Sticker	2
35	CTMT002	1 inch DOT-C2 Reflective Conspicuity Tape Solid - 6 Red x 6	2
36	CSLC943	Dust Suppressor Bracket	2
37	CSLC944	DS Water Trailer Fill U-Bolt Bracket	2
38	CTMT003	3M 983 Conspicuity Tape 2 inch x 6 inch Red 6 inch White	2
39	CSLC953	1010 Trailer Tongue Expanded Metal	1
40	CBVSMT204FP	2 Male NPT x 2 Female NPT	2
41	CBRC300200	3 x 2 Poly Reducer Coupling	2
42	CNBC016	3in Adjustable Pattern Spray Head	2
43	CNBC018	Flexible Groove Coupling- 3 in	2
44	CNBC017	90 Deg Groove X Thread Elbow- 3 in	2
45	CNBC022	Groove Coupling Gasket 3 in	2
46	CHU2051525	1.5 Zinc Plated Steel U-Bolt with Plate 1.5in-13, 3-1.5 in ID	2
47	CBBF235	2" Bolted Tank Flange	2
48	CBM220MPT	2-in FP Manifold x 2-in Male Thread	4
49	CBM221G	2" FP Manifold Gasket with Rib	24
50	CBM220BRBSWP90	2" Full Port Flange x Hose Shank Sweep	3
51	CBFC220B	2 Bolted SS Flange Clamp	9
52	CBRC200150	2 x 1-1/2" Poly Reducer Coupling	1
53	CBM220FPT	2 IN FP Manifold x 2 IN Female Thread	3
54	AVPC01	Pump Engine Cover	1
55	CBRC100075	1 x .75 Poly Reducing Coupling	1
56	CFPN04M04M	3/4 Short Nipple	3
57	CVPBV234	3/4 FPT Union Valve	1
58	CFPE04M04B	3/4 MNPT x 3/4 Hose Barb 90	1
59	CBSL07590	3/4 Poly Street Elbow 90	1
60	CFFP09B	2" poly foot strainer	1
61	CB200C	2" Female coupler to hose shank	1
62	CBTC231	2" T-Bolt Hose Clamp 2.31 MIN	16
63	CBHB200	2 Male Thread x 2 Hose Shank	2

ITEM NO.	PART #	DESCRIPTION	QTY.
64	CHSZ016365	1/4-20 inch x 5/8 inch HHTCS Type F Zinc Plated	11
65	CBM220BRB45	2 Full Port x 45 HB	3
66	CFCW001	Clamp For 3/4" Hose	2
67	E-8835T88	Elastic Tie Down, Abrasion-Resistant, 12 Long Overall x 3-1	1
68	CTEW013	Main With 16-713 RV Plug (Item A)	1
69	CTEW009	Rear Center/License Light Harness (Item D)	1
70	CTEW002	Mid-Main with Electric Brake (Item B1)	1
71	CTEW004	Rear Sill (Item C)	1
72	CTEW006	Marker Harness (Item F1)	2
73	CHBZ040725	7/16 x 1.5 Bolt	31
74	CXT0001	Cable Tie 14"	4
75	CBM220BRB	2 Full Port Flange x 2 Hose Barb	7
76	CBUB220	M220 U-Bolt Assembly	6
77	CBGHMT075MPT	.75 Male NPT X .75 Garden Hose Male Thread	2
78	CBM220PLG075	2 Full Port Flange Plug 3/4 Female Thread	2
79	CBM220TEE	2 Manifold Tee - 220 Series	3
80	CBMVSF220FP	2-in FP Manifold x 2-in Male Adaptor	3
81	CB200CAP	2-in Cap	4
82	CBMV220SL	2-in FP Side Load 3-way Manifold Valve	1
83	CBMV220SL	2IN FP Side Load 3-wayManifold Valve	1
84	CBM220CPG45	2" FP x 2" FP Manifold Coupling 45	1
85	CBSUV075FP	3/4 inch Union Valve	2
86	CTEW003	CrimpSolder Heat Shrink Butt Cconnector 16-14 Gauge	8
87	AVTRM01	Manual holder	1
88	CSLC1039	Single hose routing bracket	2
89	CLUESBO200001	0.375 EPDM AG unbranded	6
90	CHWZF015	1/4" Flat Washer	18
91	CHBZ010325	1/4 X 3/4 Bolt	8
92	CHNZN0125	1/4 Nylock nut	8
93	CSLC1040	Dual hose routing bracket	2
94	AZKT0016	Hose Rack Frame for water trailer	1

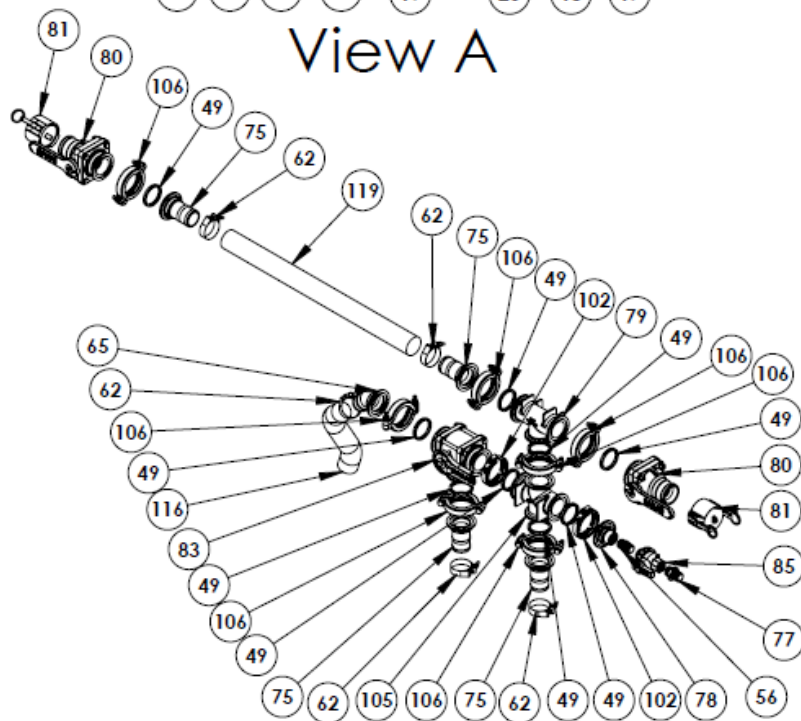


ITEM NO.	PART #	DESCRIPTION	QTY.
95	CLSC926	Manifold Valve mounting bracket	2
96	CBSL200-90	2" Poly Street Elbow 90	2
97	CSLC935	U-Bolt Mounting bracket	2
98	CBMSW220	2 inch Full Port Manifold Flange Swivel	1
99	CFPN09M09M	2 IN x 30 IN Sch 80 PVC Nipple	2
100	CTHS03	Swivel arm for water trailer	1
101	AZKT0017	Swivel Hinge Bracket for water trailer	1
102	CBFC220	2 SS Flange Worm Screw Clamp	4
103	CSLC931	Hose Rack Hook Bracket	2
104	CHCZ0212618	5/16 Zinc-Plated Steel Ring-Grip Quick-Release Pin (1)	1
105	CBM220CR	2-in Full Port Flanged Cross	1
106	CBFC220B	2in Bolted SS flange clamp	11
107	CHBZ041525	.4375 x 3.5 IN Bolt	4
108	CSLC1041	Hose reel mounting bracket	1
109	AHFPB100GY01	LARGE REEL X 100' HOSE	1
110	CSLC1049	1010 gal Water trailer hose reel riser Mounting Plate	2
111	CLUESB020005	1 EPDM AG 200 PSI BLACK HOSE	1
112	CLUPEB10009	2 IN Enforcer Hose-1	1
113	CLUPEB10009	2 IN Enforcer Hose-2	1
114	CLUPEB10009	2 IN Enforcer Hose-3	1
115	CLUPEB10009	2 IN Enforcer Hose-3	1
116	CLUPEB10009	2 IN Enforcer Hose-5	1
117	CLUPEB10009	2 IN Enforcer Hose-6	1
118	CLUPEB10009	2 IN Enforcer Hose-10	1
119	CLUPEB10009	2 IN Enforcer Hose-8	1
120	CHNZN0325	3/8" Nylock Nut	4
121	CHWZF035	3/8" Flat Washer	8
122	CHBZ030525	3/8" x 1" Bolt	4
123	CB200A90	90 Male adaptor to female thread	1



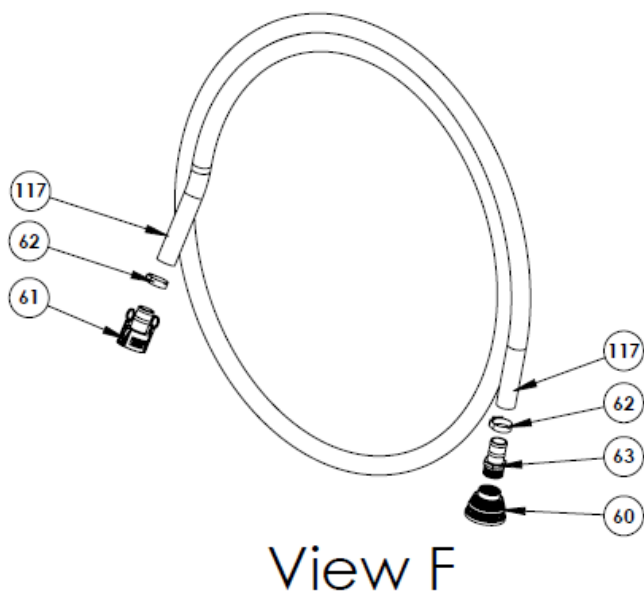
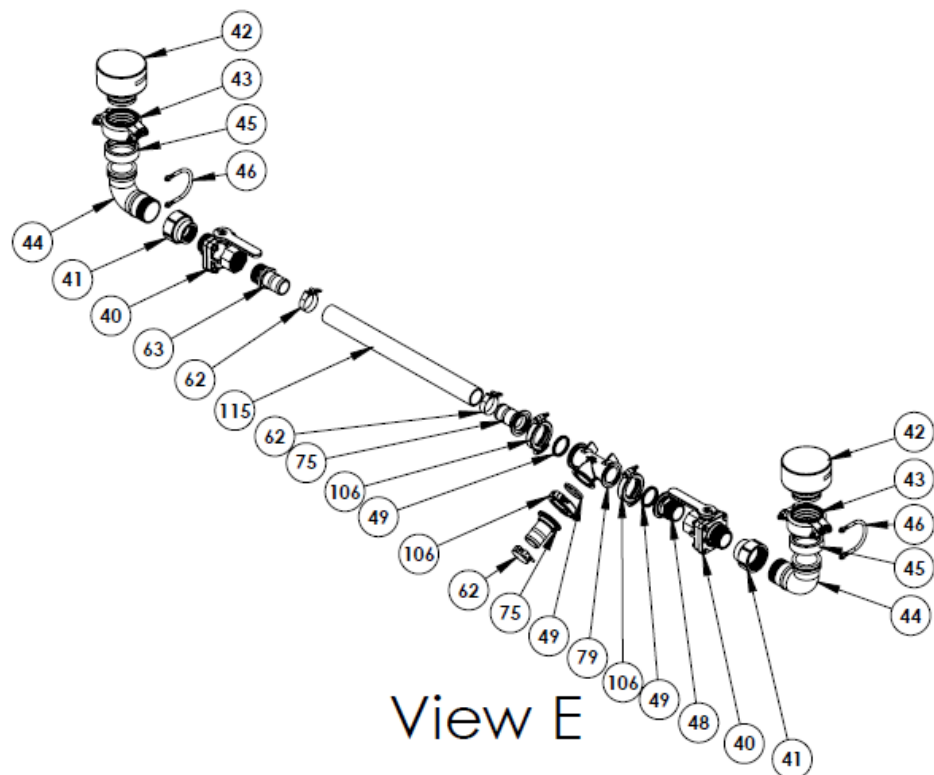


View A

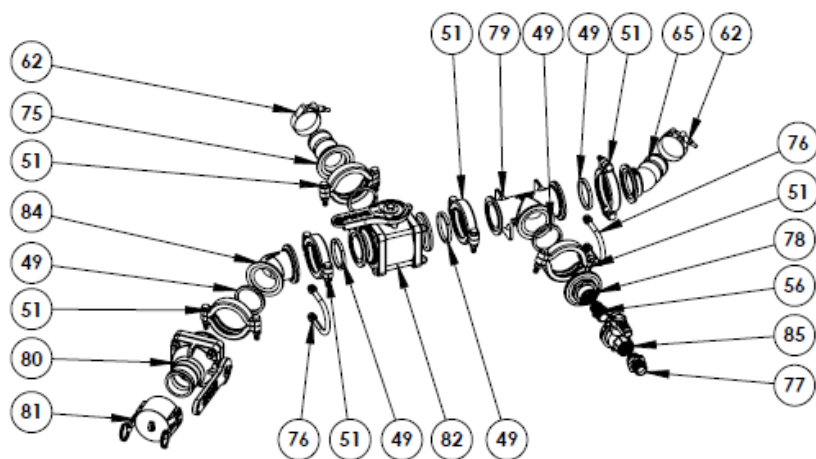


View B

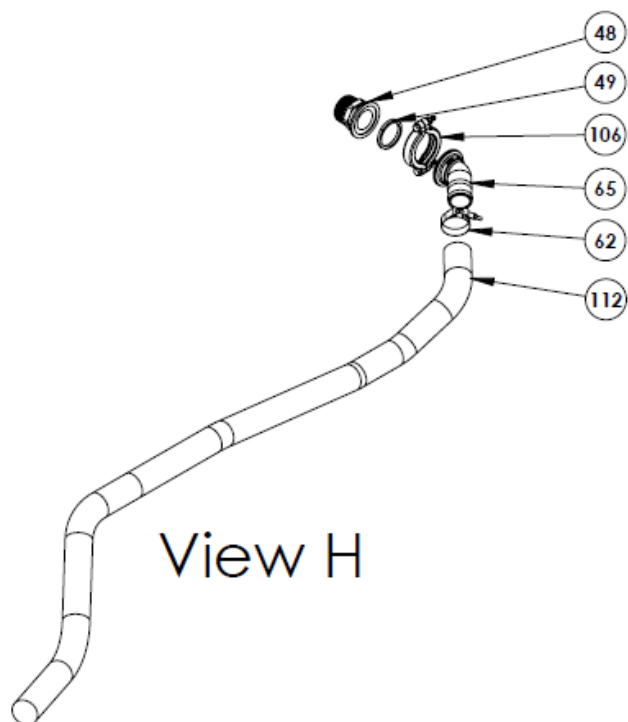




WATER TRAILER™

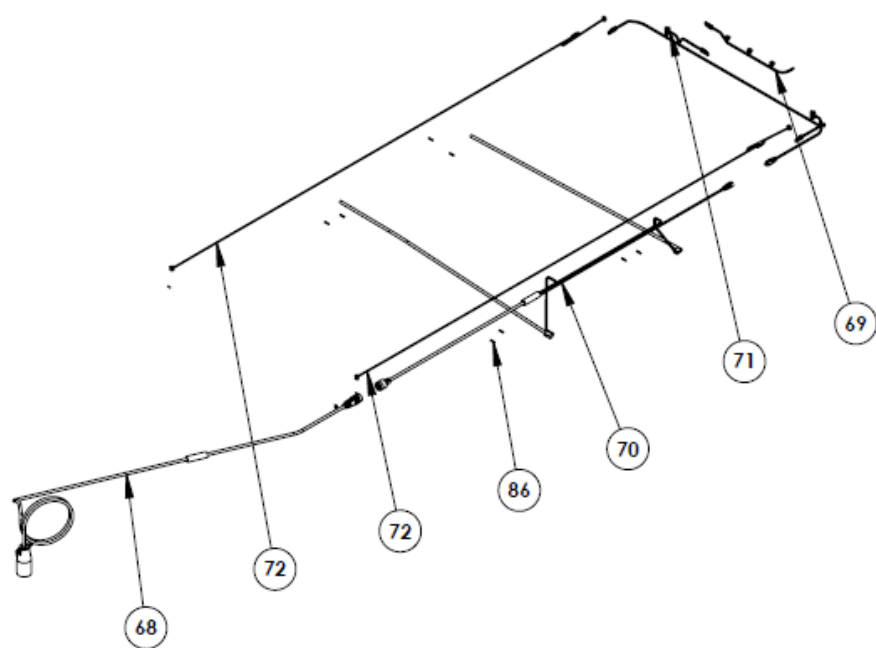


View G

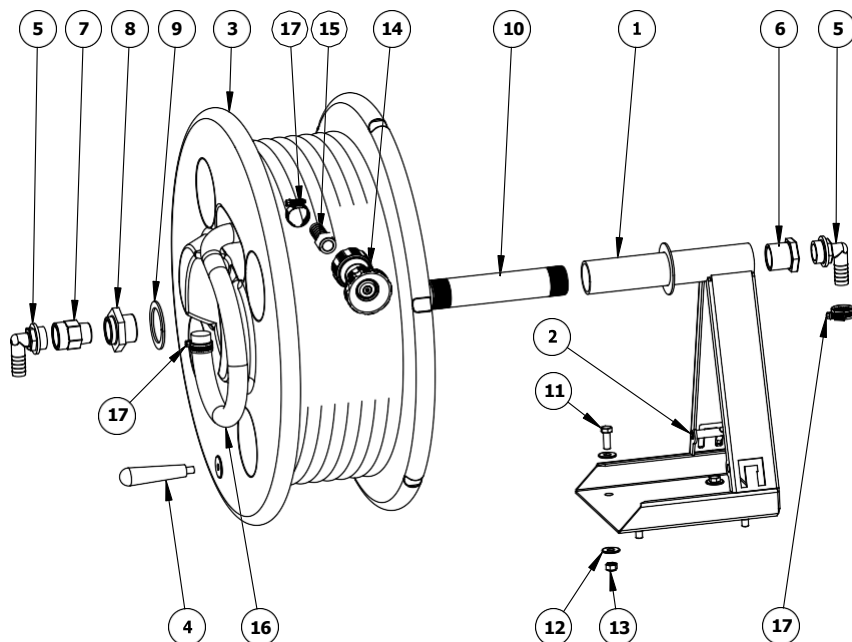


View H

**WATER TRAILER™**



# LARGE HOSE REEL



ITEM NO.	PART #	DESCRIPTION	QTY.
1	AZKH0001	Base Mount Frame for 100 HR	1
2	AZKH0017	Lock for Lg HR	1
3	AMAH02GY	HR100 Reel Only	1
4	CFRH03C	PHENOIC TAPERED HANDLE	1
5	CFRB03	1 BSP to 20mm Tail Brass Elbow	2
6	CFRB01	Back End Brass Nut for HR	1
7	CFRB04	1 BSPM to 1 BSPF Brass Swivel	1
8	CFRB02	Swivel End Brass Nut for HR	1
9	CHWZF205	2.75 Flat Washer-HR	1
10	CFRP05M05M	1 X 9 SS Nipple Tube	1
11	CHBZ030525	3/8" x 1" Bolt	4
12	CHWZF035	3/8" Flat Washer	8
13	CHNZN0325	3/8" Nylock Nut	4
14	CBGHN075	Garden Hose Nozzle	1
15	CFBS04B04MG	.75MGHT X .75HB Brass	1
16	CLUESB020004	3/4 hose from swivel into HR	1
17	CFCW001	Clamp For 3/4" Hose	3



# STAY CONNECTED

Want to be kept up-to-date on the latest news and information from Enduraplas? Enduraplas has several ways to get easy access to news alerts and instant updates on what's happening in the world of Enduraplas. Join the Enduraplas Community and connect with other Enduraplas fans, participate in giveaways, see videos of Enduraplas products in action, give us input on Enduraplas products, share your Enduraplas photos, and much more.



**FIND US ON FACEBOOK**

@enduraplas



**FIND US ON INSTAGRAM**

@enduraplas



**WATCH US ON YOUTUBE**

[YouTube.com/enduraplas](https://www.youtube.com/enduraplas)



**FIND US ON TWITTER**

@enduraplas

**#EngineeredforEndurance**





**Enduraplas®**

1 (877) 877-4370  
cs@enduraplas.com  
www.enduraplas.com

113 1st Street, Neche  
ND 58265, USA

**Order Genuine Enduraplas Parts & Accessories:**  
[parts.enduraplas.com](http://parts.enduraplas.com)



**Watch Instruction Videos:**  
[www.youtube.com/enduraplas](http://www.youtube.com/enduraplas)

**Discover More Helpful Tips:**  
[blog.enduraplas.com/spraying](http://blog.enduraplas.com/spraying)