



Polyethylene Septic Tanks

Strength & Efficiency

Our septic tanks are crafted from High-Grade Polyethylene plastic, ensuring they remain rust-free and unaffected by environmental changes. Compared to other options, this material offers superior strength, lighter weight, easier maintenance, and increased reliability. With our tanks, you can rest assured that it will remain out of sight and out of mind, just as it should be.

We offer our septic tanks as an all-in-one system, pre-plumbed and ready for seamless installation upon delivery.

- Engineered ribbed design
- High quality polyethylene
- One-piece, pre-plumbed tank
- Suitable for high water table and deep burial depth
- Limited lifetime warranty
- Fast lead times



Polyethylene Tanks

Standard Tanks

- IAPMO Z1000-2007 approved
- Maximum bury depth is 24" to top of tank
- Suitable for light lawn traffic (small tractors, mowers, but no vehicles)
- Not to be used as holding or pump tank, gravity only
- Green safety lids available

Gallons	500	750	1,000	1,050	1,300	1,500
Length (in.)	88.50	90	99	133	112.25	133
Width (in.)	67	62	67	67	67	68
Height (in.)	44	55.63	63	55.75	70	68
Weight (lbs)	210	270	400	400	570	600

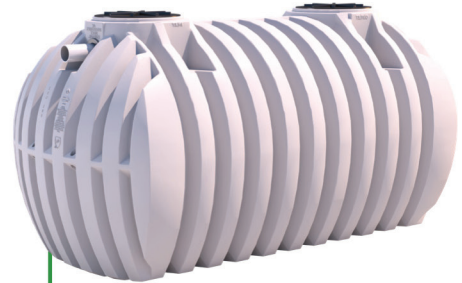


500 gallon



1,050 gallon (Low Profile)

available with dual compartments



1,500 gallon

available with dual compartments

Please Note: Not all Standard Tanks are pictured. All dimensions referenced above are available for purchase.



Polyethylene Tanks (Cont.)

Heavy Duty Tanks

- IAPMO Z1000-2007 approved
- Maximum bury depth is 48" to top of tank
- No water or gravel backfill necessary
- Install with native, free-flowing soil
- All tanks are fitted for a pump vault
- Green safety lids available

Gallons	500	750	1,000	1,050	1,300	1,500
Length (in.)	88.50	90	99	133	112.25	133
Width (in.)	67	62	67	67	67	68
Height (in.)	44	55.63	63	55.75	70	68
Weight (lbs)	235	300	500	500	660	675



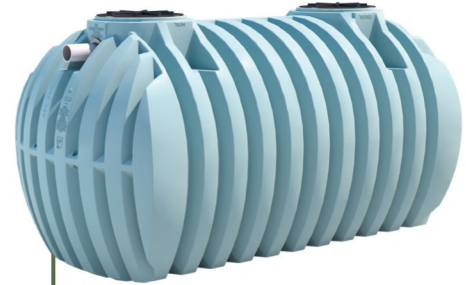
1,000 gallon

available with dual compartments



1,050 gallon (Low Profile)

available with dual compartments



1,500 gallon

Please Note: Not all Standard Tanks are pictured. All dimensions referenced above are available for purchase.

Pump Tanks

- Maximum bury depth is 48" to top of tank
- Suitable for light lawn traffic, no vehicles
- Recommended minimum fluid level for pump tanks:
 - 300 gallon is 6" of fluid
 - 750 & 1000 is 20" of fluid
- Green safety lids available

Gallons	300	750	1,000
Length (in.)	55.75	80	90
Width (in.)	55.75	80	90
Height (in.)	51.50	70	75
Weight (lbs)	135	385	440



300 gallon



750 gallon



1,000 gallon

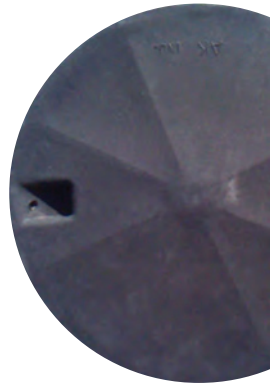
Access Lids

10" Roto-Molded Lid

Our rotational molded lids are durable covers capable of sealing a 10" access of the tank or riser.

- Used with our 500 and 750 gallon tanks (outlet side) or 10" X 30" risers
- Gasket pack with bolts included
- Capable of withstanding our recommended burial depths
- Suitable for light lawn traffic only

Included with all 500 and 750 gallon septic tanks (outlet side).



20" Injection Molded Lid

Our 20" lids are light duty covers, but still capable of sealing a 20" access of our tanks and risers.

- Used with our 500 and 750 gallon tanks (inlet side), 300 gallon I&A, 20" risers, and all other standard models
- Gasket pack with bolts included
- Capable of withstanding our recommended 2' burial depths
- Suitable for light lawn traffic only

Included with standard and heavy duty 500 and 750 gallon septic tanks (inlet side), 300 gallon I&A, 1000, 1050, 1300, and 1500 gallon standard models.



20" Roto-Molded Lid

Our 20" lids are heavy duty covers, capable of sealing a 20" access of our tanks and risers with increased durability to withstand deeper burials.

- Used with our 500 and 750 gallon tanks (inlet side), 300 gallon I&A, 20" risers, and all other standard and heavy duty models
- Gasket pack with bolts included
- Capable of withstanding our recommended 4' burial depths
- Suitable for light lawn traffic only

Included with all 1000, 1050, 1300, and 1500 gallon heavy duty models.



24" Injection Molded Lid

Our 24" lids are heavy duty covers capable of sealing a 24" access of 750 and 1000 gallon I&A tank riser.

- Used for our 750 and 1000 gallon I&A 24" risers
- Gasket pack with bolts included
- Capable of withstanding our recommended 4' burial depths
- Suitable for light lawn traffic only
- Available in green or black



Access Risers

6" X 20" Roto-Molded Riser

Our rotational molded risers are utilized to obtain access when burial depth is below grade.

- Used for standard and heavy duty 500 and 750 gallon tanks (inlet side), 300 gallon I&A, 100, 1050, 1300, and 1500 gallon tanks
- Gasket pack with bolts included
- Capable of withstanding our recommended burial depths
- Lid provided with our tank or purchased separately
- Riser is stackable and used with any 20" tank access, riser, or lid

Sold separately. For use with any of our 20" access.



10" X 30" Roto-Molded Riser

- Used for standard and heavy duty 500 and 750 gallon tanks (outlet side)
- Gasket pack with bolts included
- Capable of withstanding our recommended burial depths
- Lid provided with our tank or purchased separately
- Risers are able to be cut incrementally to achieve burial depth access.

Sold separately. For use with our 500 and 750 gallon septic tanks (outlet side).



12" X 20" Roto-Molded Riser

- Used for standard and heavy duty 500 and 750 gallon tanks (inlet side), 300 gallon I&A, 100, 1050, 1300, and 1500 gallon tanks
- Gasket pack with bolts included
- Capable of withstanding our recommended burial depths
- Lid provided with our tank or purchased separately
- Riser is stackable and used with any 20" tank access, riser, or lid

Sold separately. For use with our 500 and 750 gallon septic tanks (outlet side).



24" Roto-Molded Riser

- Used for standard and heavy duty 750 and 1000 gallon I&A tanks
- Gasket pack with bolts included
- Capable of withstanding our recommended 4' burial depths
- Required for use to cover access of tank
- Available in green or black
- Offered

Sold separately. For use with our 500 and 750 gallon septic tanks (outlet side).



Access Safety

20" Roto-Molded Safety Riser

Our 20" safety risers are utilized to create a dual cover option for security.

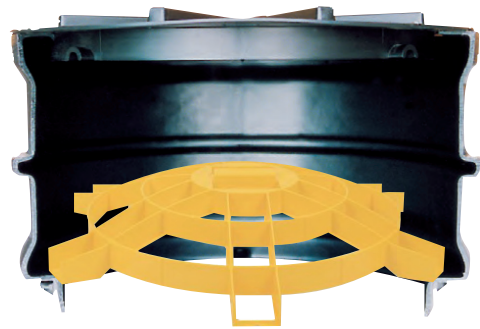
- Used for standard and heavy duty 500 and 750 gallon tanks (inlet side), 300 gallon I&A, 100, 1050, 1300, and 1500 gallon tanks
- Gasket pack with bolts included
- Capable of withstanding our recommended burial depths
- Lid provided with our tank or purchased separately
- Riser is stackable and used with any 20" tank access, riser, or lid



20" Injection Molded Safety Grate

20" safety grates are utilized to create a dual security option.

- Used with our 20" risers only
- Gasket pack with bolts included
- Capable of withstanding our recommended burial depths
- Lid provided with our tank or purchased separately
- Lids and risers sold separately



Safety Grates act as a secondary layer of protection if the riser cover was unknowingly damaged or removed. The grate fits in the upper most riser stack of the risers and prevents entry into the septic tank.

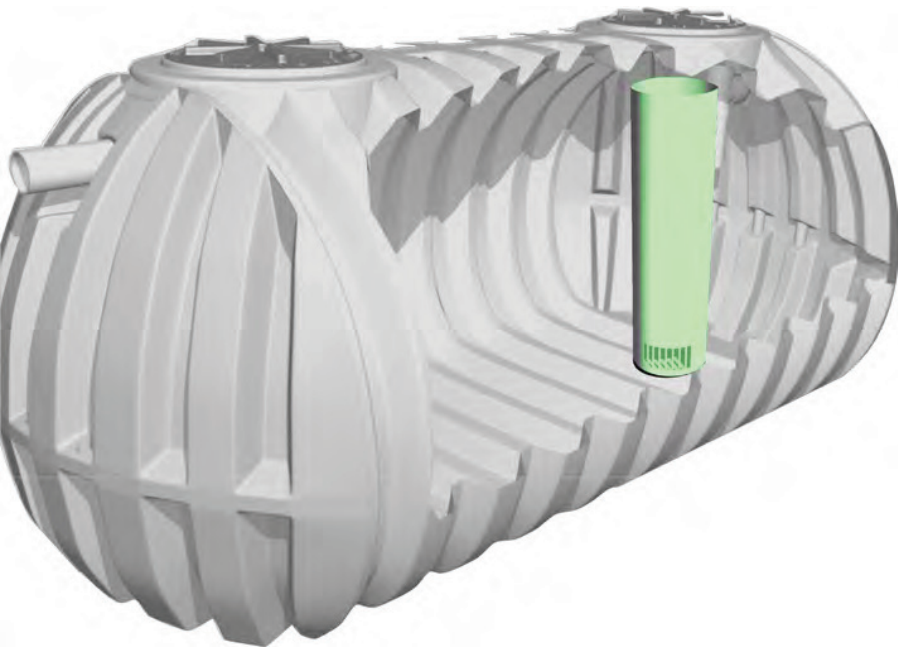
24" Injection Molded Safety Grate

Our 24" safety risers are utilized to create a dual cover option.

- Used with our 20" risers only
- Gasket pack with bolts included
- Capable of withstanding our recommended burial depths
- Lid provided with our tank or purchased separately
- Lids and risers sold separately



Pump Vaults



Pump vaults provide a vessel for separating solids within a tank.

Options for all;

- 1000, 1050, 1300, 1500 gallon standard or heavy duty tanks, as well as 750 and 1000 gallon 1&A tanks
- Gasket pack with bolts included
- Sold separately from tank as accessory
- Does not include pump or piping

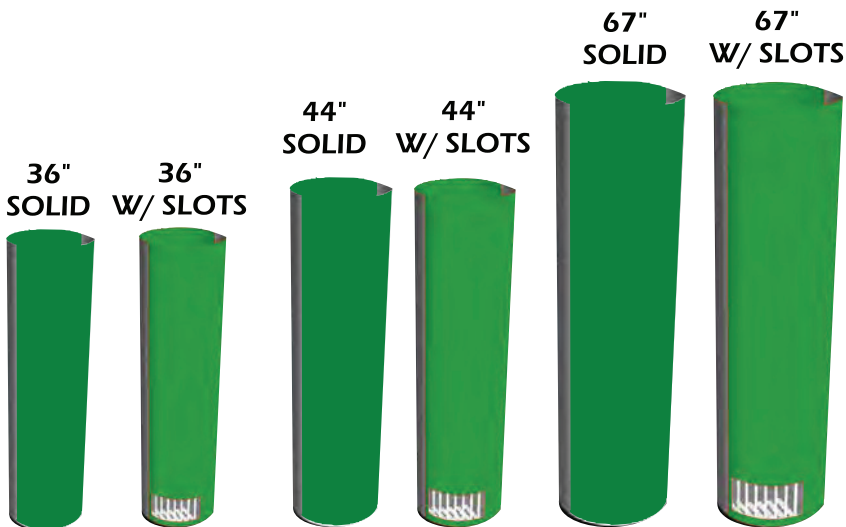
Please Use Selection Chart for Proper Tank Fitment.

Standard and Heavy Duty Pump Vaults

Gallons	1,000	1,050	1,300	1,500
Lid Size	44"	36"	44"	44"

I&A Pump Vaults

Gallons	750	1,000
Lid Size	67"	67"



Tank Accessories

PL-122 Polyloc Septic Filter

We offer the PL-122 septic filter which offers protection against drain field blockage.

- Fits all our septic tanks
- Multiple PL-122's may connect for up to 3,000 gallons
- NSF STD 46 approved
- Comes with housing, filter, and suto shut-off ball
- Alarm not included



4" Inlet/Outlet Adapt-A-Flex

4" AAF's are utilized to seal pass-thru holes in side walls of tanks.

- Used with our 4" inlets and outlets
- 4" SCH 40 and SCH 35 for septic tanks
- ASTM 1644 approved
- Other sizes available



Septic Outlet Gas Deflector

A gas deflector prevents dangerous and explosive gases from entering the drain field.

- Fits all SCH 40 and SCH 35 4" PVC pipe
- Easy to install in just a few minutes



Con-Seal Butyl

Con-Seal offers a durable seal for any access, riser, or lid.

- Used for water-tight seal of many products
- Easy to install in just a few minutes

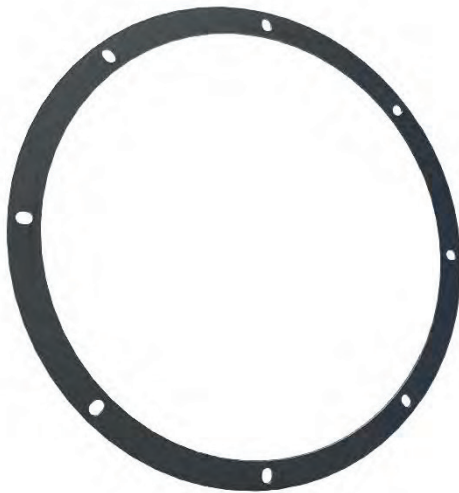


Tank Accessories (Cont.)

Gasket Packs

Use the chart below to select the correct pack if additional are needed.

Used With	Pack Contents
10" Roto-Molded Lid	Foam gasket material, lag bolts, and washers
20" Injection Molded Lid	Foam gasket material, lag bolts, and washers
20" Roto-Molded Lid	Rubber gasket material, lag bolts, and washers
24" Injection Molded Lid	Gasket material, lag bolts, and washers
10" x 30" Riser	Gasket material, lag bolts, and washers (Same as 10" lid)
6" & 12" x 20" Risers	Gasket material, lag bolts, and washers (Same as 20" lid)
24" x all Height Risers	Gasket material, lag bolts, and washers (Same as 24" lid)



Warranty Information

A.K. Industries, Inc. (AK), the manufacturer of this product, in accordance with designs and specifications contained in this brochure, as modified by any additions or changes expressly reflected on the AK invoice for the product purchased, warrants to the original Purchaser that such product (as defined below) will be free from defects in materials and workmanship for limited lifetime warranty from the date of purchase as evidenced by purchaser's proof of purchase; provided, however, that, notwithstanding any other term or provision of this limited warranty, and in accordance with the terms and conditions of the Contract of Purchase entered into between AK and Purchaser, the terms and conditions of which are hereby incorporated by reference as though fully set forth here verbatim, A.K. MAKES NO OTHER EXPRESS OR IMPLIED WARRANTY, AND EXPRESSLY DISCLAIMS ANY IMPLIED WARRANTIES, RELATING TO THE PRODUCTS DESIGN, INCLUDING IT FITNESS FOR ANY PARTICULAR PURPOSE.

Purchaser shall mean the person for whom the product is originally manufactured. AK will repair or replace, in its sole discretion, any defects in materials or workmanship in the product, but specifically excluding any defects in the design or performance of any AK product for its particular or any other purpose, occurring in the limited lifetime warranty period. AK'S LIABILITY UNDER THIS WARRANTY IS LIMITED TO THE VALUE OF THE PRODUCT, AND IT SHALL NOT BE LIABLE FOR ANY CONSEQUENTIAL DAMAGES, LABOR, MATERIAL, FREIGHT OR OTHER EXPENSES REQUIRED IN REPLACING, CORRECTING, OR RE-INSTALLING THE PRODUCT, SUCH REPAIR OR REPLACEMENT SHALL BE THE ONLY REMEDY AVAILABLE TO THE PURCHASER UNDER THIS LIMITED WARRANTY.

This limited warranty gives you specific legal rights, and you may also have other rights which vary from state to state. THIS LIMITED WARRANTY IS MADE IN LIEU OF ANY OTHER EXPRESS WARRANTIES, FURTHERMORE, AK DISCLAIMS ANY IMPLIED WARRANTIES ARISING IN CONNECTION WITH THE SALE OF THIS PRODUCT, INCLUDING ANY IMPLIED WARRANTIES OF MERCHANTABILITY OR FITNESS FOR A PARTICULAR PURPOSE. No employee, dealer, agent or other person is authorized to make any warranty or representation with respect to this product, other than is expressly contained herein. IN NO EVENT SHALL AK BE LIABLE FOR INCIDENTAL OR CONSEQUENTIAL DAMAGES RESULTING FROM THE USE OF THIS PRODUCT. SOME STATES DO NOT ALLOW THE EXCLUSION OR LIMITATION OR INCIDENTAL OR CONSEQUENTIAL DAMAGES, SO THE ABOVE LIMITATIONS MAY NOT APPLY TO YOU.

This limited lifetime warranty does not cover defects resulting from accidents, damage while in transit to our manufacturing location, alterations, unauthorized repair, failure to follow instructions, misuse or acts of God.

Any claims arising under the foregoing must be reported to AK in writing and must be explicitly defined by the above parameters determining the validity of the warranty.

For more complete information on One Clarion products and solutions, visit us on the web at: www.clarionmunicipal.com or call us at : (+1) 863-261-8388 | info@oneclarion.com

© 2023 One Clarion. All rights reserved. One Clarion terms and conditions apply.

